



lighthouse

PARTNERSHIP

WE ♥ OUR CITY



# CONTENTS

<b>1.</b>	Our Story	1–2
<b>2.</b>	The Church	3
<b>3.</b>	Vision	4
<b>4.</b>	Values	5–6
<b>5.</b>	Partnership	7–9
<b>6.</b>	Connection Pathway	10
<b>7.</b>	ACC - What we believe	11
<b>8.</b>	Information	12



# OUR STORY

## The Foundation of Lighthouse Church

Lighthouse Church is built on the foundation of Pastor Bill & Joan Beard and Ted Bartlett. Pastor Bill and Joan founded the Lighthouse Christian Centre in 1969 out of a passion to see spirit-filled believers raised up; a church that emphasized and experienced the power of God through the Holy Spirit.

Ted Bartlett founded Wollongong City Mission in Wollongong out of a desire to demonstrate the love of God through meeting the practical needs of the community. Over a 14 year period from 1983 to 1997 this grew into a large organisation that employed 300 staff and 200 volunteers across NSW. It provided a wide assortment of programs including welfare services, financial counselling and training and employment assistance programs. Many poor and disadvantaged people from Illawarra and regional NSW received vital support and assistance during the operation of this service.



## Current Leadership

These two visions come together in Paul Bartlett (son of Ted) and Annette Bartlett (daughter of Bill and Joan) who took over the leadership of the church in 2000. They have a vision for the church to combine Bill and Joan's emphasis on the power of God with Ted's emphasis on demonstrating the love of God in the community by ministering to people's practical needs. In this context, Sunday church services are seen as a time of celebration and spiritual equipping for the Christian ministry that takes place during the week.

## The Church Today

Lighthouse Church is a thriving and vibrant community of people who are passionate about God and people. We are committed to becoming a church that transforms its community through innovation and the power of God.



# THE CHURCH

The word “Church” simply describes all Christians everywhere, or those who congregate in one place. The Church is variously described as the “family of God”, the “house of God” and the “body of Christ”. Jesus Christ is committed to building the Church and therefore so should we be. The Church is not a building or structure, it is people.

## **What type of place is Lighthouse Church?**

It is a place where we meet together regularly in order to grow spiritually and numerically (**Acts 2:42-47; Hebrews 10:25**).

It is a place of great power and blessing when we gather together to worship God and pray (**Matthew 18:18-20; Psalm 133**).

The Church family is a place of relationship and security. It is a place where we can love God and each other (**Matthew 22:37-40; John 13:34-35**).

The “house of God” is a place of praise and blessing. It is a place where we can honour and serve Him (**Psalm 84**).

The “body of Christ” is a place of life and growth. It is a place where everyone has a distinct and vital part to play (**1 Corinthians 12:12-31**).

## **Matthew 5:13-16**

“You are the salt of the earth; but if the salt loses its flavour, how shall it be seasoned? It is then good for nothing but to be thrown out and trampled underfoot by men. You are the light of the world. A city that is set on a hill cannot be hidden. Nor do they light a lamp and put it under a basket, but on a lamp-stand, and it gives light to all who are in the house. Let your light so shine before men, that they may see your good works and glorify your Father in Heaven.”



# VISION

## **Our Mandate:**

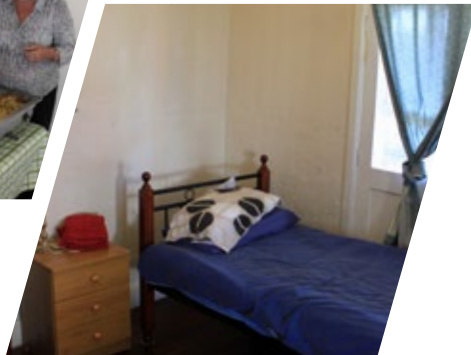
We will create a church that transforms it's community through innovation and the power of God.

## **Vision: Where we are going**

Our vision is to be a church that never shuts; a church without walls. A church that has so many laneways into the community, its only limit is the imagination of the people inside the church. Everyone is a minister all the time. We exist so that everybody would come to know Christ, be transformed and grow as a disciple. We exist for our community by being real people, doing good, God's way.



**Beat The Streets  
Community Meal  
Program**



**my|place Youth Housing**

# VALUES

## **The Word and Prayer - what is God saying to you today?**

Every aspect of our personal and corporate life should be established and sustained by daily communication with God through reading the Bible and prayer.

The Bible is the inspired Word of God (2 Timothy 3:16).

- It is accurate, reliable and relevant
- It is our final authority providing truth, strength and wisdom for our everyday life
- It provides every tool that we need to develop and grow a fruitful ministry
- A personal, Holy Spirit empowered prayer life is essential for spiritual health (Romans 8:26)
- Prayer gives us access to the presence of God; it is the power to build a successful ministry
- Prayer brings God's guidance, encouragement and correction
- Personal prayer brings intimacy; corporate prayer brings unity and authority



## **Evangelism - who did you share Christ with this week?**

Evangelism is the communication of the gospel in such a way that it is made clear and relevant to those who don't yet know Christ.



- We must maintain a concern for the lost and be compelled by love to go out of our way to reach people
- We are called to share Christ with our friends, family and colleagues and those in our sphere of influence (Acts 1:8)
- We are to creatively share Christ personally and corporately

## **Multiplication - who are you intentionally growing in Christ?**

We will create a culture in which all leaders recognise the call to multiply by:

- Helping people to grow spiritually in their walk with God
- Discipleship
- Developing leaders

A multiplying culture should result in exponential growth and will be created by all leaders and department heads developing strategy for the recruiting, training and releasing of leaders and volunteers.

Luke 19:16-17; Matthew 28:18-20



## **Care - who are you intentionally caring for?**

Care is the expression of God's divine love, grace and mercy toward people. This will be accomplished by:



- Bringing care and support to those who partner and fellowship with the Lighthouse family
- Providing general care at a Life Group level which includes practical care, authentic relationships and crisis care
- Ensuring adequate care of staff, lay people and volunteers
- Shepherding people under your ministry by
  - Strengthening the weak
  - Searching for those who are missing
  - Connecting those who are isolated
- Identifying, discerning and meeting special needs of the people and liaising with the Pastoral Care Department

## **Community - what act of kindness are you doing outside the church?**

Community is moving beyond the walls of the church by:

- Providing practical and innovative initiatives
- Developing meaningful ways to carry out acts of kindness and community service
- Providing support and building the lives of those in the community
- Developing partnerships with a variety of like-minded people and organisations locally, nationally and internationally

# PARTNERSHIP

The Bible uses a word for our relationship with God and with others - that word is "fellowship". This word really means "joint participation" or "partnership".

....This kingdom of faith is now your home country. You're no longer strangers or outsiders. You belong here, with as much right to the name Christian as anyone. God is building a home. He's using us all - irrespective of how we got here - in what he is building. He used the apostles and prophets for the foundation. Now he's using you, fitting you in brick by brick, stone by stone, with Christ Jesus as the cornerstone that holds all the parts together. We see it taking shape day after day - a holy temple built by God, all of us built into it, a temple in which God is quite at home. Ephesians 2:19-22

## **What are the benefits of Partnering with Lighthouse Church?**

A HOME - a place where you can say you belong - a family (Hebrews 10:24-25).

FRIENDSHIP- the church is full of people who are looking for genuine friendship. We encourage people: "If you want a friend - be a friend". One of the best ways to do this is to join a mid-week life group.

PROTECTION - through placing you under spiritually mature and Godly leaders (Hebrews 13:17; Acts 20:28-29).

IDENTITY - you are identified as a genuine believer (Romans 12:5).

ACCOUNTABILITY - we grow and mature as we submit to one another (Ephesians 5:21).

THE EMPOWERED WORD - where you can hear fresh revelation from the Bible that applies to the "now" of your life.

WORSHIP - helps you focus on God; prepares you spiritually and emotionally for the week ahead.

MULTIPLICATION - as God expands you, the body strengthens and grows.

CONTRIBUTION - God's design and purpose is for you to be valuable to the church. You can and will make a difference in our church.

COMMUNITY - providing opportunity to invest into the lives of people in our city and beyond.

DISCOVERY - you are encouraged and empowered to discover and use your God-given abilities.

AFFILIATION - we are part of the Australian Christian Churches (formerly called the Assemblies of God) This aligns us with the fastest growing Christian movement in the nation. Please refer to the last page for the Statement of Faith for our movement.

## What are my requirements for Partnership?

### **Salvation**

- You must be a committed Christian - Born Again (**John 3**)

### **Committed to**

- Water Baptism
- Baptism of the Holy Spirit

### **Protect the Unity of the Lighthouse Church**

- By acting in love towards others in partnership
- By refusing to gossip
- By following leaders  
(**Romans 14:19; 1 Peter 1:22; Ephesians 4:29; Hebrews 13:17**)

### **Share the responsibility of my church**

- By praying for its growth
- By inviting the unchurched to attend
- By warmly welcoming those who visit  
(**1 Thessalonians 1:1b-2; Luke 14:23; Romans 15:7**)

### **Serve the ministry of the church**

- By discovering my God-given abilities
- By being equipped to serve my pastors
- By developing a servant's heart  
(**1 Peter 4:10; Ephesians 4:11-12; Philippians 2:3-4, 7**)

## Support the testimony of my church

- By attending faithfully
  - By living a godly life
  - By giving regularly
- (Hebrews 10:25; Philippians 1:27; Corinthians 16:2; Leviticus 7:30)

## Join a Life Group

- By committing to attend regularly

## How to become a Partner

Please fill out a blue card with your name and details. In your own writing, state on the blue card "I have decided to become a partner of Lighthouse Church".

Please note that this means that you and or your family have read through the partnership booklet. They must be over 16 years old or consent needs to be given through a parent or guardian.



# CONNECTION PATHWAY

The connection pathway is a journey all people are guided through when they join the Lighthouse Church. We encourage everyone to join a Life Group at any involvement level.

<b>Stage One:</b>	Decision for Christ New To Church	(Receive New Christian booklet)
<b>Stage Two:</b>	Meet The Team	(Receive Partnership booklet)
<b>Stage Three:</b>	Water Baptism	
<b>Stage Four:</b>	Serving	(Receive Discovery booklet)
<b>Stage Six:</b>	DNA Session	
<b>Stage Seven:</b>	Life Group Leadership	

LIFEGROUP

Being in a Life Group is important at any stage.

When people make a commitment to the Lord, a New Christian Booklet along with a Bible is given to them. It is important that the Life group Leader goes through and discipless them through this book.

# WHAT WE BELIEVE

## **AUSTRALIAN Christian Churches**

We believe that the Bible is God's Word. It is accurate, authoritative and applicable to our everyday lives.

We believe in one eternal God who is the Creator of all things. He exists in three Persons: God the Father, God the Son and God the Holy Spirit. He is totally loving and completely holy.

We believe that sin has separated each of us from God and His purpose for our lives.

We believe that the Lord Jesus Christ as both God and man is the only one who can reconcile us to God. He lived a sinless and exemplary life, died on the cross in our place, and rose again to prove His victory and empower us for life.

We believe that in order to receive forgiveness and the 'new birth' we must repent of our sins, believe in the Lord Jesus Christ, and submit to His will for our lives.

We believe that in order to live the holy and fruitful lives that God intends for us, we need to be baptised in water and be filled with the power of the Holy Spirit. The Holy Spirit enables us to use spiritual gifts, including speaking in tongues which is the initial evidence of baptism in the Holy Spirit.

We believe that God has individually equipped us so that we can successfully achieve His purpose for our lives which is to worship God, fulfill our role in the Church and serve the community in which we live.

We believe that God wants to heal and transform us so that we can live healthy and prosperous lives in order to help others more effectively.

We believe that our eternal destination of either Heaven or hell is determined by our response to the Lord Jesus Christ.

We believe that the Lord Jesus Christ is coming back again as He promised.  
***For the DOCTRINAL BASIS OF ACC please visit [www.acc.org.au](http://www.acc.org.au)***

# INFORMATION

## LIGHTHOUSE CHURCH

**CENTRAL CAMPUS**  
**1 RAILWAY STATION SQUARE**  
**WOLLONGONG**

**SOUTHERN CAMPUS**  
**4/9 DURGADIN DRIVE**  
**ALBION PARK RAIL**

### SUNDAY SERVICES

**Central Campus:** Sunday 10:00am & 6:30pm

**Southern Campus:** Sunday 9:00am  
(Children's Programs from 1 to 12 Years)

### YOUTH NIGHTS (12-18 Years)

**Central Campus**

Friday 6:00pm - 8:30pm

**Southern Campus**

Friday 6:30pm - 9:00pm

**PHONE:** (02) 4229 9744  
**FAX:** (02) 4229 9932  
**POST:** PO Box W73, West Wollongong, NSW 2500  
**EMAIL:** [connect@lighthousechurch.com.au](mailto:connect@lighthousechurch.com.au)  
**WEB:** [www.lighthousechurch.com.au](http://www.lighthousechurch.com.au)

*For any questions visit the information desk on Sundays or call the office between the hours of 9.00am and 5.00pm Monday to Friday.*

## GIVING INFORMATION

### General Tithe

BSB: 062-624  
Account: 0090 7822  
Reference: [Your name if you want]

### Missions Giving:

BSB: 062-624  
Account: 0090 7822  
Reference: Missions [+ your name if you require a tax receipt]

### Building For The Future/Dream Builders

BSB: 062-624  
Account: 1045 2077  
Reference: [Your name if you require a tax receipt]

Note: Missions is generally not tax deductible, unless we clearly specify that a particular month is going towards a particular tax deductible entity



# lighthouse